

MONTHLY MEMBERSHIP PROGRESS REPORT

LOCATION INDIA

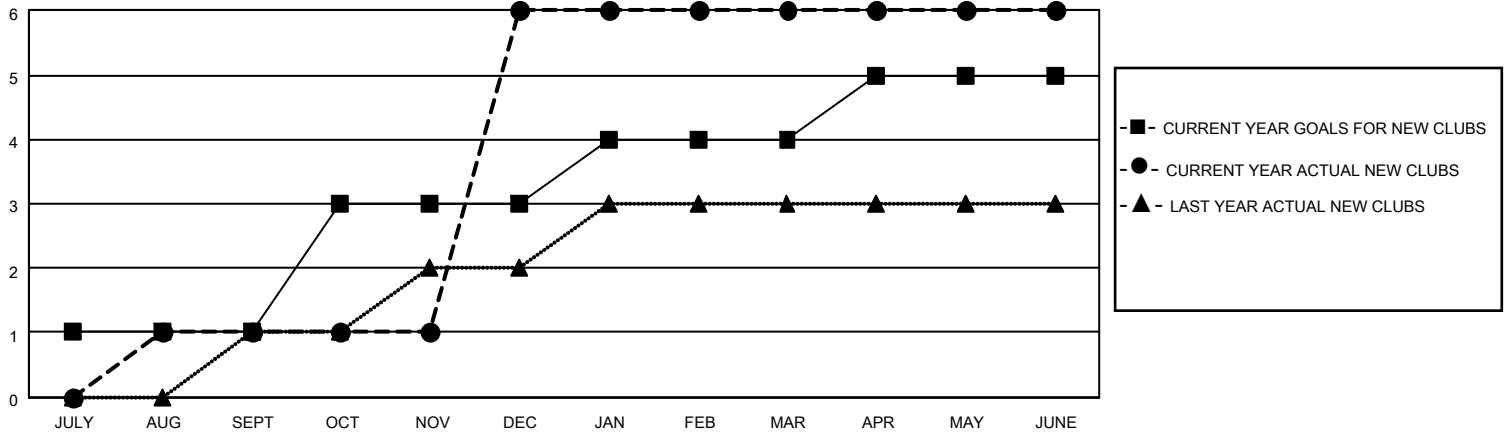
District 3234H2

Results as of: 6/30/2021

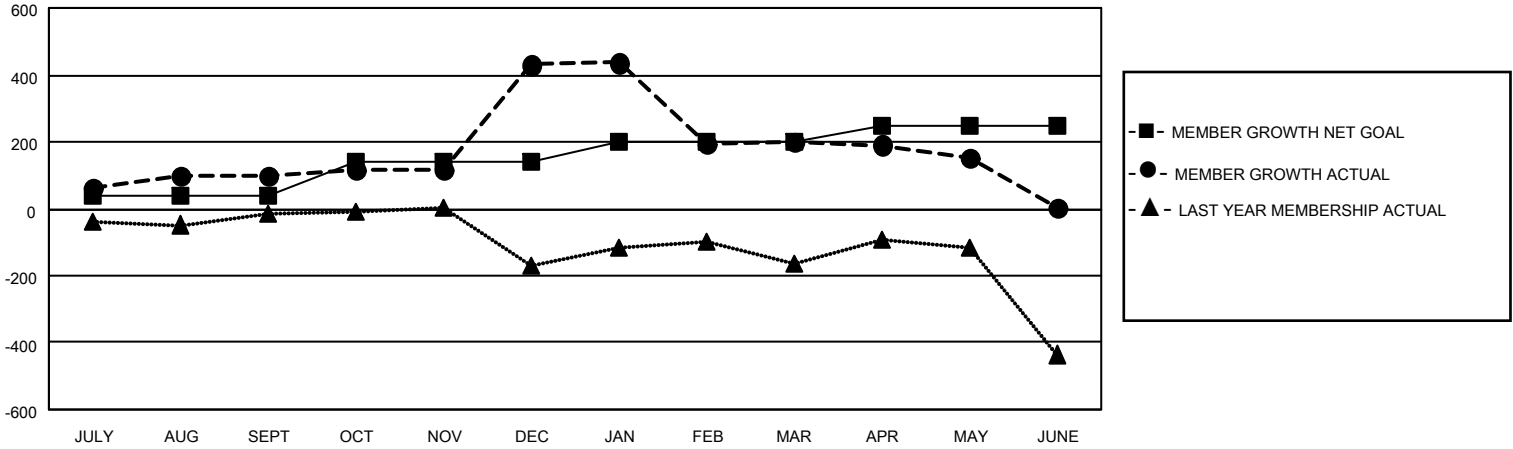
Clubs			
RESULTS FOR 2020-2021			
QUARTER	NEW CLUB GOAL	NEW CLUBS	DROPPED CLUBS
JULY/AUG/SEPT	1	1	0
OCT/NOV/DEC	2	5	0
JAN/FEB/MAR	1	0	8
APR/MAY/JUNE	1	0	0

Members			
RESULTS FOR 2020-2021			
QUARTER	MEMBER GROWTH NET GOAL	MEMBER GROWTH ACTUAL	DROPPED MEMBERS ACTUAL (including transfers)
JULY/AUG/SEPT	40	160	28
OCT/NOV/DEC	100	415	78
JAN/FEB/MAR	60	118	280
APR/MAY/JUNE	50	102	268

GOALS AND ACTUAL NEW CLUBS CUMULATIVE



GOALS AND ACTUAL MEMBERS CUMULATIVE



DROPPED CLUBS: 8

58 CLUBS OF 86 ADDED 1 OR MORE NEW MEMBERS

<u>GENDER DISTRIBUTION</u>	
MALE	2,352 (74.60%)
FEMALE	801 (25.40%)

<u>DROPPED MEMBERS</u>	
DECEASED	18
CLUB CANCELLED	256
OTHER	380
TOTAL	654

[CLICK HERE FOR CUMULATIVE MEMBERSHIP DATA](#)

TOTAL FAMILY UNIT MEMBERS	1,527
FAMILY MEMBERS PAYING HALF DUES	900